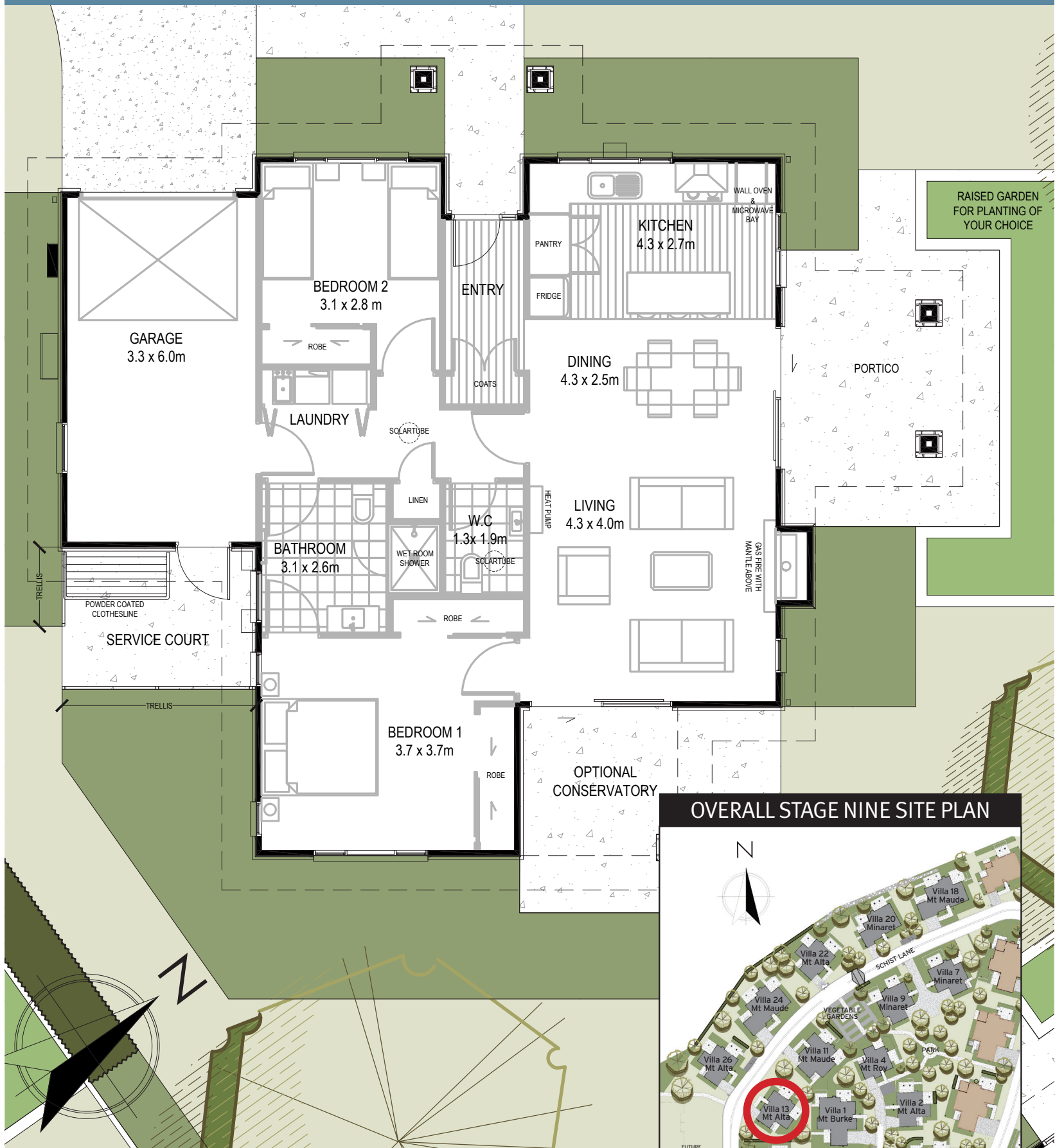


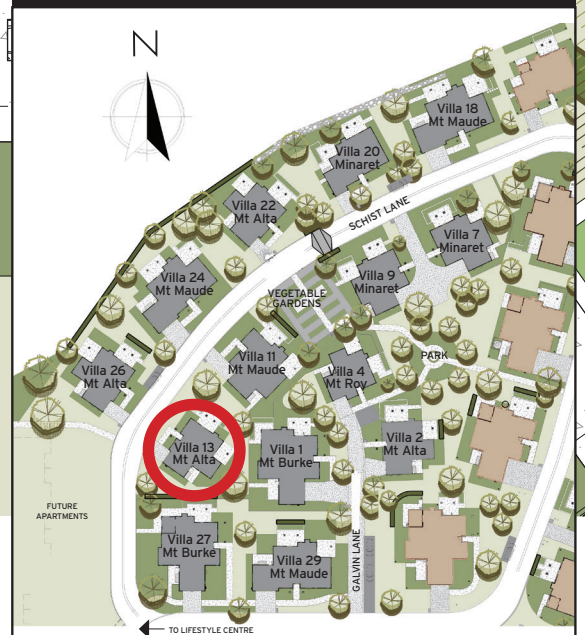
# Mt Alta

## 13 Schist Lane

The Mt Alta villa has two bedrooms, a separate guest toilet, two generous outdoor living areas, single internal access garage and all this in a spacious 120m<sup>2</sup>.



OVERALL STAGE NINE SITE PLAN



PLAN IS SUBJECT TO FINAL DESIGN AND COUNCIL APPROVALS.  
VILLA STYLES, LOCATION AND GROUNDS MAY BE SUBJECT TO CHANGE



*Photos are indicative only*

## Mt Alta villa features:

- 120m<sup>2</sup> floor area
  - Two spacious bedrooms
  - Ensuite/Dual access bathroom with separate guest toilet
  - Open plan kitchen, living and dining areas
  - Full kitchen with Fisher and Paykel appliances, including: dishdrawer; ceramic cooktop; rangehood; wall mounted oven; and waste disposal unit
  - Kymira benchtop and glass splashback
  - Soft-closing hush drawers
  - Water filter
  - Wall-mounted heat pump
  - Glass-covered gas fireplace
  - Laminated wood flooring in kitchen and entrance foyer
  - Tiles with under-tile heating in bathroom
  - Internal access garage with remote entry
  - Over-sized switches and power sockets
  - Emergency call system
  - Fully landscaped gardens, plus a raised planter for plants of residents' choice
  - Two outdoor living areas
  - Handrails are fitted in every ensuite
- If purchased prior to construction:
- Option to add a conservatory

